



CANADIAN OVERSEAS PETROLEUM LIMITED

FACTSHEET | FALL 2019

CSE: XOP, LSE: COPL

SHARE STRUCTURE
(As of November 2019)

Shares Outstanding: 3.48 B

Warrants: 78.7 M

Options: 107.4 M

Fully Diluted: 3.67 B

Senior management with COPL has a long history of accomplishments which started with the discovery, appraisal and development of Brenda and Nicol Oil Fields, the North Sea, with an initial production rate of 35,000 bbl/d in 2007. From 2002 to 2008 they drilled as operator 120 exploration, appraisal and production wells.

High-Impact Projects in Nigeria and Mozambique

NIGERIA

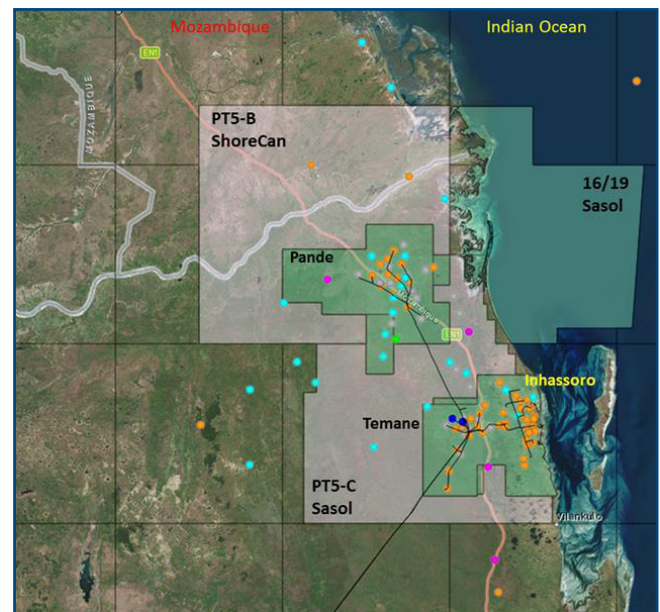
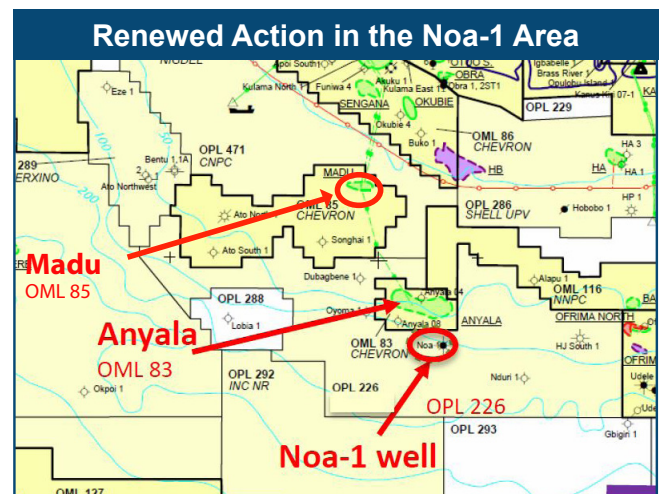
COPL created the ShoreCan Joint Venture with **50% partner Shoreline Group of Nigeria** to gain access to assets in Sub-Saharan Africa:

- acquired 80% of an oil discovery offshore Nigeria with significant appraisal development upside; awaiting ministerial approval of the transaction
- tax holidays for XOP with JV partner in Nigeria
- NNPC requested an accelerated program, now a US\$200 M development project

MOZAMBIQUE

COPL has been awarded onshore Block PT5-B through its **50%-owned subsidiary ShoreCan**:

- 4,356 sq km in size, surrounding the north, west and southwest margins of the Pande Gas Field which has reported gas reserves of 2.6 TCF and production in 2016 of 475 mmcf/d
- prospective for light oil and gas in the productive zones at Pande, Temane and Inhassoro as well as deeper horizons





CANADIAN OVERSEAS PETROLEUM LIMITED

FACTSHEET | FALL 2019

CSE: XOP, LSE: COPL



“I’ve been in the business 30 years, and I have never seen a higher-octane, more awesome risk/reward situation than this one, which involves the former CEO of Oilexco Inc., Arthur Millholland.”

- Warren Irwin, Rosseau Asset Management

COPL Board and Management

Board

Arthur Millholland - Executive Director, President and CEO

Harald Ludwig - Independent Director, Chairman of the Board

Viscount William Astor - Independent Director

Massimo Carello - Independent Director

John Cowan - Independent Director

Management

Arthur Millholland - Executive Director, President and CEO

Aleksandra Owad - CFO

Dr. Richard Mays - V.P. Business Development & Counsel

Rod Christensen - V.P. Exploration & Exploitation

Faralee A. Chanin - Corporate Secretary

Nick Pillar - Manager Geophysics

Shoreline Canadian Overseas Corporate Structure

Directors

Kola Karim - Chief Executive Officer SG

Tunde Karim - Executive Director SG

Arthur Millholland - Chief Executive Officer COPL

Viscount William Astor - Non-Executive Director COPL

Check our Twitter updates



<https://twitter.com/COPLinvestor>

For more information, please contact:

Canadian Overseas Petroleum Ltd.

Arthur Millholland, President & CEO

T: (403) 262-5441

E: amillholland@canoverseas.com

Yellow Jersey PR Limited

Harriet Jackson/Charles Goodwin

T: +44 (0) 75 4427 5882

E: copl@yellowjerseypr.com

CHF Investor Relations

Cathy Hume, CEO

T: (416) 868-1079 x 231

T: 1-877-838-1079

E: cathy@chfir.com